



# KeepSafe® Gold

## Security Features and Procedures

You can help reduce losses by inspecting all incoming bags for tampering and other unauthorised openings.

### Properly Sealed Bag

The most important step in knowing whether a KeepSafe® bag has been tampered with is to recognise what a properly sealed bag looks like.

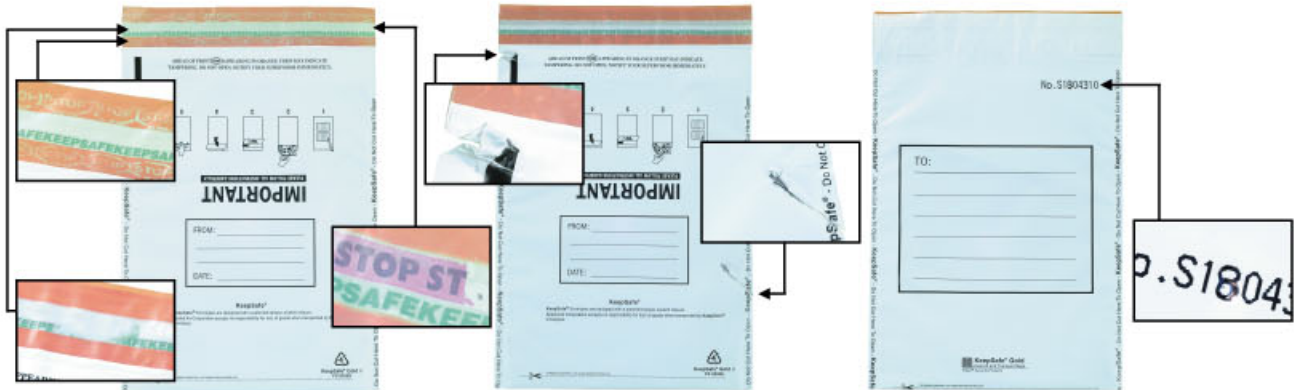
The front and back of the closure should be firmly and smoothly sealed together.



Top closure and side seals should be fully intact. They should be uncut, unbroken, undistorted and free of smears or colour variations.

### Possible Evidence of Tampering

What to look for:



1. Stop Signs Apparent in Orange Strip.
2. Pink Appearing in White Strip.
3. Discoloration, Distortion or Smearing of Green KeepSafe® Text. (TOP)

Film Discolored, Incomplete Text Against Side Seal or Cut (TOP/SIDE SEALS)

Film Distorted or Numbering Altered (TOP)

### Recommended Security Procedures:

If you suspect the bag has been opened without authorisation or has been tampered with . . . (refer to internal procedures)

- A. Do not open bag.
- B. Call supervisor to review situation.

If supervisor detects tampering then:

1. Log bag under dual control.
2. Inform client of bag tampering.
3. Seal the bag in a new tamper-evident bag.
4. Return to client.



**Sealed Air Corporation**

**Our Products Protect Your Products®**

© Sealed Air Corporation 2001  
www.sealedair.co.nz